

Operating Manual

LED Solar Light "Classic Light"



These instructions relate **ONLY** to this product and contain important information for using the product for the first time. Please keep these instructions for later reference and should always accompany the product in the event of transference to a new user.

1. Introduction

Dear Customer,

Thank you for purchasing the solar light.

With this solar light you purchased a product manufactured according to the current state of technology.



This product fulfils all requirements of the valid European and national regulations. The conformity was proved. The relevant declarations and documentation are deposited with the manufacturer.

To maintain this state and guarantee a safe operation, you as the user will have to follow this operating manual!

2. Safety Instructions



- In case of damages caused by not following this operating manual, the warranty rights will expire! We exclude liability for any consequential damages!
- We exclude liability for property or personal damages caused by inappropriate handling or not following the safety instructions.
- In these cases any guarantee rights will expire.

Due to safety and admission reasons (CE) it is not allowed to arbitrarily reconstruct and/or change the solar light.

Therefore, please keep to the operating manual.

The accident prevention rules of the association of the industrial trade cooperative association for electric plants and working material are to be considered in industrial environments

3. Usage in Accordance with Requirements

The solar light is constructed for the outdoor usage and operation. The integrated accumulators are charged by the solar cell in the upper part of the light. At darkness, the light is automatically switched on and is switched out at sunrise. As light source, 2 very strong light emitting diodes (LED) are installed. These LEDs guarantees a strong luminosity with only low power consumption.

-- However, please note that the duration of illumination may decrease due to a lack of sunshine as well as in the winter months--

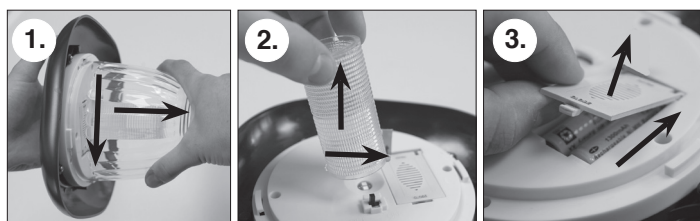
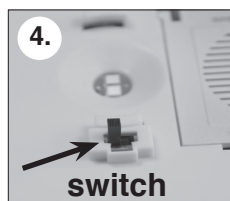
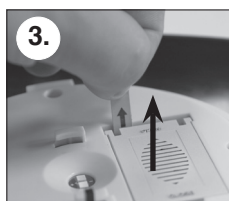
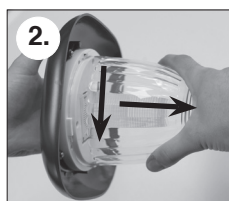
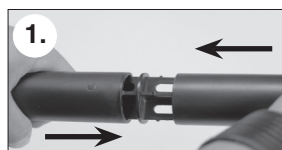
In case of longer periods without sunshine (insolation) the accumulator is charged only insufficiently and is thus not able to guarantee a permanent readiness for operation. However, this does not indicate that the solar light is defect. Please wait for the next sunny days and the light will again be working accordingly

4. Start-up

1. Please carefully take all parts out of the package.
2. Carefully connect the ground spike with the rod and insert it into the ground. (pic.1)
Note: Please do not apply any force.
3. Unscrew the lamp head from the luminary anticlockwise and pull out the battery safety clip. (pic. 2 + 3)
4. With the switch, it's possible to select the lighting color between cold white and warm white. (pic. 4)
5. Now screw the lamp head back onto the luminary clockwise and carefully insert the light onto the holder of the plastic rod.

The solar light is now activated.

Note: The duration of illumination is strongly dependent on the intensity and duration of sunshine during the day. During the winter months the duration of illumination will generally be shorter. If the lamp should not irradiate on the first evening, please wait for a sunny day.



5. Exchange of the rechargeable batteries

Rechargeable batteries of solar lights have to be exchanged every 2 years on average. Please only insert new and identical in construction 1,2 V/ 1300 mAh Mignon (AA) NiMH batteries. In case you should not be able to get this capacity from your (local) retailer you may also use batteries with a higher capacity.

1. Hold the upper part firmly and untwist the bottom part of the lamp head anti clockwise and take the components apart (pic. 1).
2. Unscrew the LED diffuser clockwise and remove it (pic. 2).
3. Slide the battery cover back and fold them back (pic. 3).
4. Remove the two batteries from the batterybox by means of a screwdriver.
5. Insert two new batteries with correct polarity into the two battery compartments. It is recommended to charge the new batteries in a battery charger before inserting those batteries.
6. Close the light in reverse order.

Note: Batteries have to be disposed of in an environmentally sound way and do not belong into the household waste. Your retailer is bound by law to take back the old batteries.

6. Malfunctions

-Lamp is not automatically switched on at darkness

- An outside light source (e.g. streetlight) simulates daylight and prevents the lamp from switching on. Place the lamp at a darker location.

- Lamp is not switched on at darkness or only for a short period of time.

- Is the lamp connected?

- Accumulator weak or defective. Exchange of the accumulators.

Battery Recycling:

- Used batteries or accumulators must be disposed in the domestic waste.
- The consumer is legally obliged to bring back old accumulators upon usage, e.g. to public waste collecting locations or to the place (shops, etc.) where those batteries are sold.
- Batteries that contain harmful substances are marked with the "strike through dustbin" and one of the chemical symbols.



NiMH

7. Technical Data

- Solar module: 1,2 Wp crystalline Silicium
- Lighting color: 2800 K (warm white) / 6500 K (cold white)
- Light intensity: 50 lm / 55 lm
- Light emitting diode: each lighting color 1 pcs. „Nichia“ (LED)
- Duration of illumination: max. 8 hours in case of fully charged set of accumulators
- Degree of protection: IP 44
- Protection class: III
- Set of accumulators: 2 x NiMH 1,2 V/1300 mAh (AA size)

Rechargeable battery notes

- Rechargeable batteries should not be played with by children. Never leave rechargeable batteries lying around; they could be swallowed by children or pets.
- Rechargeable batteries must never be short-circuited, disassembled or thrown into fire. This leads to a danger of explosion!
- Leaking or damaged rechargeable batteries can cause chemical burns when they come into contact with skin. For this reason, please make use of suitable protective gloves.
- Rechargeable batteries should only be replaced by structurally identical rechargeable batteries from the same manufacturer. Normal batteries must not be used since these are not rechargeable.
- Make sure the rechargeable batteries are inserted with the correct polarity.
- For long periods of time of non-use (for example, storage), remove the inserted rechargeable batteries to avoid damages via the leaking rechargeable batteries.

Manufacturer/Importer:

esotec GmbH, Weberschlag 9, D-92729 Weiherhammer
Tel.-Nr: +49 9605-92206-0 Fax.-Nr: +49 9605-92206-10
e-mail: info@esotec.de Internet: www.esotec.de

Manufacturer item-Nr: 102020

Disposal:

Dear customer,

please cooperate in avoiding waste. When you intend to dispose of the product in future, please consider that it contains valuable raw materials suited for recycling.

Therefore, do not dispose it of with domestic waste but bring it to a collection point for the recycling of waste electrical and electronic equipment.

Thank you very much for your cooperation!



Copyright, esotec GmbH