

Usage instructions

solar water pump „Seerose“



Customer support:

If you have problems or questions regarding this product, simply contact us!

Monday to Friday 9 am to 12 noon and 1 pm to 4 pm.

By phone: +49 9605-92206-0

By e-mail for ordering spare parts: ersatzteil@esotec.de

By e-mail for questions about the product: technik@esotec.de

Product: Manufacturer Item No.: 101770

These instructions relate **ONLY** to this product and contain important information for using the product for the first time. Please keep these instructions for later reference and should always accompany the product in the event of transference to a new user.

1. Introduction

Dear Customer,

Thank you for purchasing the solar pump. With this solar pump you purchased a product manufactured according to the current state of technology.

CE This product fulfils all requirements of the valid European and national regulations. The conformity was proved. The relevant declarations and documentation are deposited with the manufacturer.

To maintain this state and guarantee a safe operation, you as the user will have to follow this operating manual!

2. Safety Instructions



- In case of damages caused by not following this operating manual, the warranty rights will expire! We exclude liability for any consequential damages!
- We exclude liability for property or personal damages caused by inappropriate handling or not following the safety instructions.

- In these cases any guarantee rights will expire.

Due to safety and admission reasons (CE) it is not allowed to arbitrarily reconstruct and/or change the solar light.

Therefore, please keep to the operating manual.

The accident prevention rules of the association of the industrial trade cooperative association for electric plants and working material are to be considered in industrial environments.

3. Intended use

This water lily is designed for use in garden ponds. The float consists of a solar module, water pump and various water sprinklers.

The water lily floats freely on the water surface. As soon as sunlight shines on the solar cell, the built-in water pump starts working.

The water pump has no On/Off switch. As soon as sunlight shines on the solar module, the pump starts pumping water.

4. Installation and commissioning

1. Take out all parts carefully from the box.
2. Attach a water sprinkler of your choice on the pipe in the centre of the water lily.
3. Place the water lily on the water surface and dip the water lily at least 10 cm under water. Now rotate the water lily by 360°. Thus, all the air can escape from the pump and the filter.

Now the water lily is ready for use.

Note: The pump should never be operated when dry. Always make sure that there is enough water in the pond or basin. A dry run damages the pump!

4. The 'Water lily' can be fixed in position in the pond by means of a cord attached to an eyelet on the underside of the 'water lily'. In this way drifting into shaded areas of the pond is prevented and you get the longest possible period of operation.

Note: the pump should never be allowed to run dry. Please make sure that there is always sufficient water in the pond or in the container. Running the pump when it is dry will seriously damage the pump.

5. Care and maintenance

In order to maintain the performance of the pump, the pump and the jets must occasionally be washed out with warm water after every period of water contamination. To clean the pump, the housing for the 'water lily' must be opened.

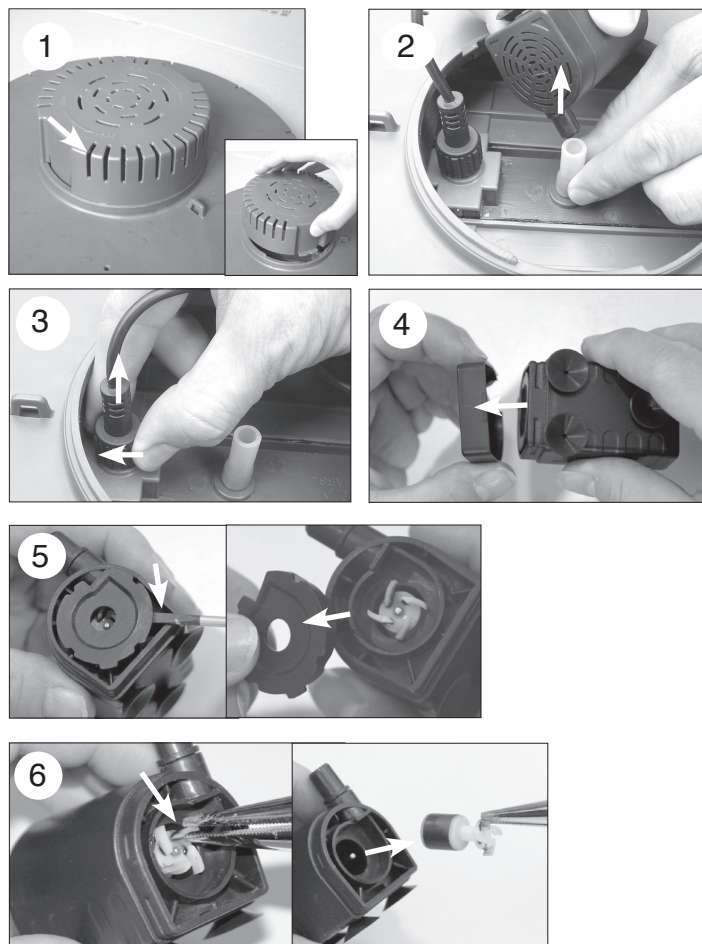
Note: Please do not use force when taking the pump apart and when reassembling it. The parts are very delicate and could easily break.

1. Hold the upper part and screw off the filter (in position "open") and take apart the parts.
2. Remove the pump from the tube (figure 2). Unfasten the sealing cap from the plug

and undo the connection (figure 3).

3. Remove the cover from the front side of the pump (figure 4).
4. Pull the cover from the pump wheel forwards (figure 5). Use a suitable screwdriver to help you.
5. Pull the wheel out using a small pair of pliers (figure 6).
6. Clean the parts carefully with warm water. Also make sure that the outlet from the pump is free from any contamination.
7. Now reassemble the pump and the housing using these instructions in the reverse order.

The pump is again ready for operation.



7. Technical data

- | | |
|--------------------------------|---------------|
| - Operating voltage: | 6,7 VDC |
| - Solar module power: | 1.8 Wp |
| - Max. delivery rate: | 160 l/h |
| - Max. fountain height: | approx. 40 cm |
| - Operating temperature range: | +4 to +40°C |
| - Dry run: | no |
| - Degree of protection: | IP 67 |
| - Class of protection: | III |

Note: The pump is only suitable for pumping water.

Note: Protect the pump from frost!

During cold winter months, the pump must be taken out of the water and placed/ stored in a warm area. The solar module can spend the winter outdoors.

8. Safety information:

DANGEROUS for children! Children could easily swallow the small parts that come with this pump and its packaging material. Please keep at a safe distance. These parts could otherwise lead to choking or suffocation!

Manufacturer:

esotec GmbH - Gewerbegebiet Weberschlag 9 - D-92729 Weiherhammer
Tel.-Nr: +49 (0)9605-92206-0 - Fax.-Nr: +49 (0)9605-92206-10
Internet: www.esotec.de

Disposal:

Dear customer,

please cooperate in avoiding waste. When you intend to dispose of the product in future, please consider that it contains valuable raw materials suited for recycling.

Therefore, do not dispose it of with domestic waste but bring it to a collection point for the recycling of waste electrical and electronic equipment.

Thank you very much for your cooperation!

