

Operating Instructions

Floating pond aerator „Power Float 1000“

GB

Customer support:

If you have problems or questions regarding this product, simply contact us!
 esotec GmbH, Industriegebiet Weberschlag 9, D-92729 Weiherhammer
 Internet: www.esotec.de Manufacturer Art.-Nr: 101855
 By phone: +49 9605-92206-0
 By e-mail for ordering spare parts: ersatzteil@esotec.de
 By e-mail for questions about the product: technik@esotec.de

DANGER for children! Keep children away from the swallowable small parts (rising pipe and sprinkler) and the packaging material. There is danger of suffocation!

WARNING: Danger of tripping! Lay the connecting cable so that it does not become a trip hazard!

CAUTION Damage to property! If you install the solar module without the module holder, you must ensure sufficient stability. If the module overturns or a foreign object strikes against it, the solar module may be damaged.

Disposal:

Dear customer,
 please cooperate in avoiding waste. When you intend to dispose of the product in future, please consider that it contains valuable raw materials suited for recycling. Therefore, do not dispose it of with domestic waste but bring it to a collection point for the recycling of waste electrical and electronic equipment.



Thank you very much for your cooperation!

1. Introduction

Dear customer, we thank you for purchasing the Solar Globelight. With this Solar Light you have purchased a product that complies with the latest and most up-to-date technology.

CE This product complies with the European and National Standards. The relevant certificates of conformity are deposited with the manufacturer.

To preserve this standard and in order to maintain safety you must adhere to the use instructions!

2. Security Instructions

! In the event of any problems arising or damage occurring from not following these instructions, the warranty is deemed cancelled. The manufacturer will not be held responsible for any claims or damages arising from the misuse of this product.

- For safety reasons and in order to maintain standards (CE) you are prohibited from altering or changing any component in the product.
- Please follow the instructions very carefully.
- This product is only suitable for private use!

3. Function and intended use

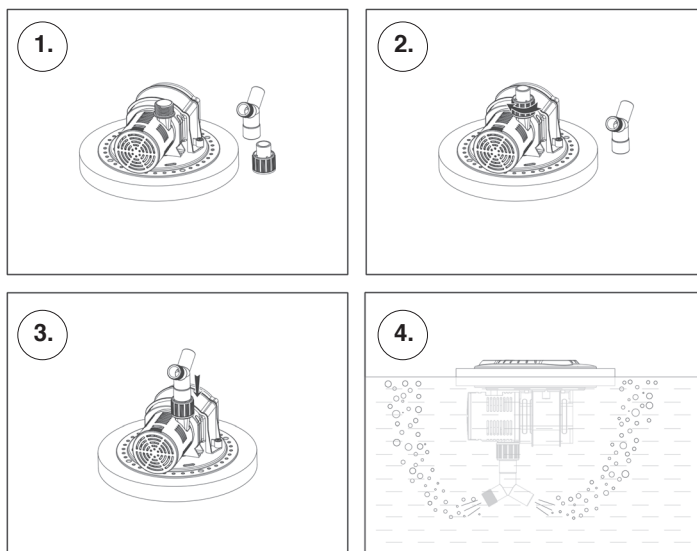
This floating pond aerator floats on the water surface and is supplied with energy by a solar module or an accumulator station.

This pond aerator not only works like an air pump but is also an injector pump (jet pump). This pump sucks in water just below the surface, through an opening on the surface air is automatically sucked in by this negative pressure, mixed with the water and pushed back into the pond. This results in a particularly powerful unit which operates with high efficiency and saves energy.

The pond aerator can be fixed in the pond with a small eyelet. The aeration jet can either be directed directly perpendicular to the pond bottom or distributed by a Y-piece.

The pumps are only designed for DC voltage, operation on AC voltage will destroy the pump! When used with a solar module, the pumps will only operate when sufficient sunlight hits the solar module.

To avoid damage to the pumps during the cold season, the pumps must be removed from the water in frosty conditions.



4. installation and commissioning

1. Roll out the connection cable on the pump completely.
2. The pond aerator can be operated in three different ways depending on the pond depth.
 - 1. Possibility (pic. 1) without additional parts:** Here you get the highest air flow rate. The aeration is less deep and the water circulation is also the lowest. Especially suitable for smaller ponds.
 - 2. Possibility (pic. 2) with thread adapter:** This is the variant we recommend. Here you get a high air flow rate in combination with a very good water circulation. Due to the downward directed water-air jet the pond is optimally circulated even in deeper areas.
 - 3. Possibility (pic. 3 & 4) with threaded adapter and Y-piece:** This variant is comparable with possibility 2, but offers less deep aeration due to the Y-piece. Thus, the pond aerator can also be used in less deep pond zones.
3. Since the pond aerator moves on the pond surface, it can be fixed in the pond with a cord to an eyelet on the bottom.
4. Now place the pond aerator on the water surface.
5. Now supply the pump with energy. This can be done using a solar module included in the set. Plug the plug connection firmly together and secure it against the ingress of water or moisture by tightening the sealing cap.

Note: The plug is protected against reverse polarity, no force must be used when plugging in.

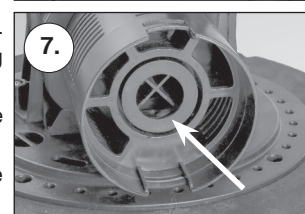
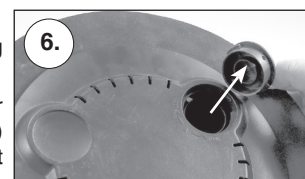
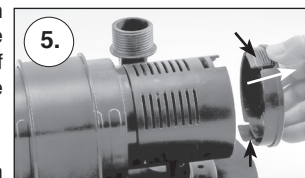
Note: If the pump is supplied with power, it starts up with a delay. An internal protective circuit first checks whether the pump is completely immersed in water.

5. Care and maintenance

In order to maintain the performance of the pump, the pump must be washed with warm water, depending on water contamination. Proceed as follows:

Note: Please do not use force when disassembling and reassembling the pump. The parts can break easily. If something does break, all spare parts are available at www.esotec.de

1. Unplug the pump and remove it from the water.
2. Remove the coarse filter by pressing the side latches (picture 5).
3. Turn the round cover on the upper side to the „OPEN“ position (Fig. 6) and remove the cover. Underneath it is the opening for air intake.
4. Now wash out the parts and the suction area of the pump under a running tap with some pressure (Fig. 7)
5. Reassemble the pump in reverse order.
6. Now place the pond aerator on the water surface.



7. Reconnect it to the appropriate power source.

The pond aerator is ready again for operation.

6. Malfunctions

Pump delivers little / no air

- Clean pump according to instructions!
- Check supply line to the pump and correct connection to the solar module!

Air intake noise is very loud

- The top cover of the muffler is not completely closed?

Pump does not react/ no function

- Is the pump in the water?
- Is the operating voltage reversed?
- Wait for self-test! After applying the operating voltage, it takes a few seconds until the pump starts up.
- Pump dirty? Clean the pump see point 5.

7. Technical data

- Operating voltage: 18 VDC
- Air volume: approx. 400 l/h
- Power consumption: approx 1,05 A
- Power consumption: approx 19 W
- Protection class: IP 68
- Protection class: III
- Cable length: 5 m
- Dimensions (D x H): 28 x 16,5 cm cm (without adapter)
- Weight: approx. 2,8 kg

8. Spare parts

You can order all spare parts conveniently on the Internet at **www.esotec.de**

- | | |
|-----------------------------|------------------|
| 1. Plastic lid. | Part no.: 911212 |
| 2. Filter cover | Part no.: 911215 |
| 3. Set of accessories tubes | Part no.: 911216 |

