

Using Instructions LED Solar hanging lights



5. Exchange of the rechargeable battery

The capacity of the battery will diminish after approx. two years and it will have to be exchanged. The customary battery is available from the manufacturer or at your local retailer's.

The used type of battery is: NiMh 1.2 V/ 300 mAh (2/3 AAA). Spare part item no: 901027 (www.esotec.de).

When exchanging the battery, please proceed as follows:

1. Slowly unscrew the glass ball anticlockwise and remove it from the upper part.
2. Slide the switch into the position „OFF“
3. Loosen the screws in the upper part of the lamp and carefully remove the cover.
4. Take the inserted battery out of the holder and insert an identical in construction battery with correct polarity (used type of battery: NiMh 1.2V/ 300 mAh size: 2/3 AAA).
5. Carefully reinsert the cover into the upper part and, in doing so, make sure that no cables are pinched.
6. Now screw the 2 screws back in and slide the switch back into the position „ON“.
7. Reattach the light ball onto the upper part and tighten it clockwise. In doing so, make sure that the glass ball is firmly seated.
The lamp is now activated again.

Note: Spent batteries must be disposed off in an environmental-friendly way and should not be thrown into the dustbin. Your dealer is legally obliged to take back the old batteries.

Customer support:

If you have problems or questions regarding this product, simply contact us!

By phone: +49 9605-92206-0

By e-mail for ordering spare parts: ersatzteil@esotec.de

By e-mail for questions about the product: technik@esotec.de

Product: Manufacturer Item No.: 102308, 102309

These instructions relate **ONLY** to this product and contain important information for using the product for the first time. Please keep these instructions for later reference and should always accompany the product in the event of transference to a new user.

1. Introduction

Dear Customer,

Thank you for purchasing the solar light. With this solar light you purchased a product manufactured according to the current state of technology.

CE This product fulfils all requirements of the valid European and national regulations. The conformity was proved. The relevant declarations and documentation are deposited with the manufacturer.

To maintain this state and guarantee a safe operation, you as the user will have to follow this operating manual!

2. Safety Instructions



- In case of damages caused by not following this operating manual, the warranty rights will expire! We exclude liability for any consequential damages!
- We exclude liability for property or personal damages caused by inappropriate handling or not following the safety instructions.

- In these cases any guarantee rights will expire.

Due to safety and admission reasons (CE) it is not allowed to arbitrarily reconstruct and/or change the solar light.

Therefore, please keep to the operating manual.

The accident prevention rules of the association of the industrial trade cooperative association for electric plants and working material are to be considered in industrial environments.

3. Intended use

The solar pendant lamps constitute an atmospheric and effect lighting for the garden. A solar module is installed in the upper part of the lamp. This module charges the integrated rechargeable battery during sunlight. The integrated energy-saving white light emitting diode switches on automatically as soon as it gets dark and provides for an atmospheric lighting at no charge.

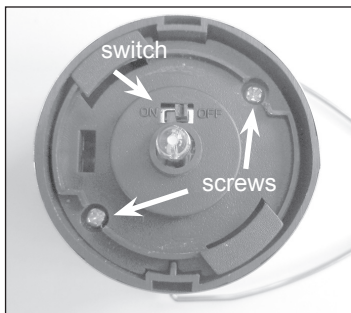
The maximum light ON time of the lighting with a fully charged battery amounts to approximately 6 hours. The lamp is designed splashproof and must not be immersed in the water or exposed to a high water pressure (e.g. high-pressure cleaner or splashing with the garden hose). The product is suitable for year-round outdoor use.

4. Putting into operation

1. Please carefully take the lamp out of the package.
2. Carefully turn the glass ball anticlockwise and remove it from the upper part.
3. Slide the switch into the position „ON“
4. Reattach the light ball onto the upper part and screw it tight clockwise. In doing so, pay attention that the glass ball is firmly seated.
The lamp is now activated.

Attention: There is a danger of lacerations when the luminary is broken or damaged!

Note: During the winter months the duration of illumination will generally be shorter. If the lamp should not yet start working on the first evening, please wait for a sunny day.



6. Malfunction

Lamp does not switch on at night

- An external filament (e.g. street lights) simulates natural light on the solar module and prevents the lamp from switching on. Place the lamp in a dark place.
- Is the battery placed with correct polarity?

Lamp does not switch on at night or only briefly.

- Polarity reversed while replacing battery?
- Battery weak or faulty?
Charging the battery in a standard charger. Changing the battery.

7. Technical data

- Solar module: amorphous silicone
- Degree of protection: IP 44
- Protection class: III
- Battery: 1 NiMh 1.2 V/300 mAh (2/3 AAA)
- Lamp: item.-no: 102308: 1 x LED/ 6000 K (cold white)
item.-no: 102309: 4 x LEDs/ 3000 K (warm white)
- Luminosity period: Max. 6 hrs with full battery
- Working temperature: -20°C bis + 40°C

Battery take-back

- Batteries must not be discarded into domestic waste.
- The consumer is legally required to return batteries after use, e.g. to public collecting centers or to battery distributors.
- Contaminant-containing batteries are labeled with the sign "crossed-out trashcan" and one of the chemical symbols. Used batteries should be disposed environmentally friendly and should not be discarded into domestic waste. Your dealer is legally required to take back old batteries.



Rechargeable battery notes

- Rechargeable batteries should not be played with by children. Never leave rechargeable batteries lying around; they could be swallowed by children or pets.
- Rechargeable batteries must never be short-circuited, disassembled or thrown into fire. This leads to a danger of explosion!
- Leaking or damaged rechargeable batteries can cause chemical burns when they come into contact with skin. For this reason, please make use of suitable protective gloves.
- Rechargeable batteries should only be replaced by structurally identical rechargeable batteries from the same manufacturer. Normal batteries must not be used since these are not rechargeable.
- Make sure the rechargeable batteries are inserted with the correct polarity.
- For long periods of time of non-use (for example, storage), remove the inserted rechargeable batteries to avoid damages via the leaking rechargeable batteries.

Manufacturer / Importer

esotec GmbH - Gewerbegebiet Weberschlag 9 - D-92729 Weiherhammer
Tel.-Nr: +49 9605-92206-0 Fax.-Nr: +49 9605-92206-10
Internet: www.esotec.de WEEE-Nr: DE 59284711

Disposal:

Dear customer,
please cooperate in avoiding waste. When you intend to dispose of the product in future, please consider that it contains valuable raw materials suited for recycling.
Therefore, do not dispose it of with domestic waste but bring it to a collection point for the recycling of waste electrical and electronic equipment.



Thank you very much for your cooperation!