

Using Instructions LED Solarlight "Trio Sticks"



Customer support:

If you have problems or questions regarding this product, simply contact us!
Monday to Friday 9 am to 12 noon and 1 pm to 4 pm.
By phone: +49 9605-92206-0
By e-mail for ordering spare parts: ersatzteil@esotec.de
By e-mail for questions about the product: technik@esotec.de
Product: Manufacturer Item No.: 102600, 102601

These instructions relate **ONLY** to this product and contain important information for using the product for the first time. Please keep these instructions for later reference and should always accompany the product in the event of transference to a new user.

1. Introduction

Dear Customer,

Thank you for purchasing the solar light. With this solar light you purchased a product manufactured according to the current state of technology.

CE This product fulfils all requirements of the valid European and national regulations. The conformity was proved. The relevant declarations and documentation are deposited with the manufacturer.

To maintain this state and guarantee a safe operation, you as the user will have to follow this operating manual!

2. Safety Instructions



- In case of damages caused by not following this operating manual, the warranty rights will expire! We exclude liability for any consequential damages!
- We exclude liability for property or personal damages caused by inappropriate handling or not following the safety instructions.

- In these cases any guarantee rights will expire.

Due to safety and admission reasons (CE) it is not allowed to arbitrarily reconstruct and/or change the solar light.

Therefore, please keep to the operating manual.

The accident prevention rules of the association of the industrial trade cooperative association for electric plants and working material are to be considered in industrial environments.

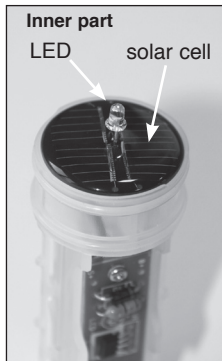
3. Intended use

The solar glow stick is a mood and decorative lighting device for the garden and the pond.

A high-performance solar cell (virtually invisible) is built into the lower part of the glow light and charges the built-in battery during sunlight. The white, energy-saving LED installed on top of it switches on automatically at dusk and provides atmospheric lighting for free.

The maximum duration of lighting with a full battery is approximately 8 hours. The product can be used outdoors all year round.

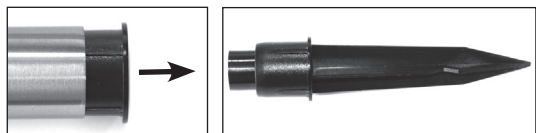
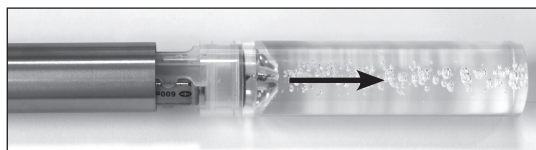
Note: Please make sure that the solar lamp is installed with full exposure to sunlight on the southern side. The product is not usable if installed on the northern side, under bushes etc. In winter, the light must always be free of snow.



4. Commissioning

1. Take the parts out of the box carefully.
2. Gently remove the plastic filament from the stainless steel tube.
3. Pull out the protective strip from the battery terminal slowly. The light is now activated.
4. Now insert the plastic filament again into the stainless steel tube.
5. The earth spike is located on the other side of the stainless steel tube. Pull out the plastic part and remove the earth spike. Insert the earth spike again reversed and then plug it back into the stainless steel tube.

Note: Generally, the duration of the light is lesser during winter months. If the lamp does not light up on the first evening, please wait for a sunny day.



5. Changing the battery

After one to two years, the capacity of the batteries will decrease and they will have to be replaced. The batteries are commercially available in stores or from the manufacturer.

The type of battery used is as follows: **Mignon NiMh 1.2 V/ 600 mAh.**

1. Pull the plastic filament from the stainless steel tube.
2. Remove the battery from the holder.
3. Place the new battery with correct polarity and insert the plastic filament again into the stainless steel tube.



Note: Spent batteries must be disposed off in an environmental-friendly way and should not be thrown into the dustbin. Your dealer is legally obliged to take back the old batteries.

6. Malfunction

Lamp does not switch on at night

- An external filament (e.g. street lights) simulates natural light on the solar module and prevents the lamp from switching on. Place the lamp in a dark place.
- Is the battery placed with correct polarity?

Lamp does not switch on at night or only briefly.

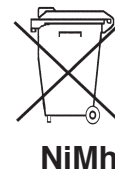
- Polarity reversed while replacing battery?
- Battery weak or faulty?
Charging the battery in a standard charger. Changing the battery.

7. Technical data

Solar module:	30 mWp cristalline
Light color:	102600: 6500 K (cold white), 102601: 2800 K (warm white)
Light intensity:	102600: 0,55 lm, 102601: 0,5 lm
Degree of protection:	IP 44
Protection class:	III
Battery:	each 1 NiMh 1.2 V/600 mAh (Mignon AA)
Lamp:	each 1 „Nichia“ LED
Luminosity period:	Max. 8 hrs with full battery
Working temperature:	-20°C bis + 40°C

Battery take-back

- Batteries must not be discarded into domestic waste.
- The consumer is legally required to return batteries after use, e.g. to public collecting centers or to battery distributors.
- Contaminant-containing batteries are labeled with the sign "crossed-out trashcan" and one of the chemical symbols. Used batteries should be disposed environmentally friendly and should not be discarded into domestic waste. Your dealer is legally required to take back old batteries.



Rechargeable battery notes

- Rechargeable batteries should not be played with by children. Never leave rechargeable batteries lying around; they could be swallowed by children or pets.
- Rechargeable batteries must never be short-circuited, disassembled or thrown into fire. This leads to a danger of explosion!
- Leaking or damaged rechargeable batteries can cause chemical burns when they come into contact with skin. For this reason, please make use of suitable protective gloves.
- Rechargeable batteries should only be replaced by structurally identical rechargeable batteries from the same manufacturer. Normal batteries must not be used since these are not rechargeable.
- Make sure the rechargeable batteries are inserted with the correct polarity.
- For long periods of time of non-use (for example, storage), remove the inserted rechargeable batteries to avoid damages via the leaking rechargeable batteries.

Manufacturer / Importer

esotec GmbH - Gewerbegebiet Weberschlag 9 - D-92729 Weiherhammer
Tel.-Nr: +49 9605-92206-0 Fax.-Nr: +49 9605-92206-10
Internet: www.esotec.de WEEE-Nr: DE 59284711

Disposal:

Dear customer,
please cooperate in avoiding waste. When you intend to dispose of the product in future, please consider that it contains valuable raw materials suited for recycling.
Therefore, do not dispose it of with domestic waste but bring it to a collection point for the recycling of waste electrical and electronic equipment.
Thank you very much for your cooperation!

