

## Using instructions

### Solar PIR Floor Lamp „Yanara 31“

#### 1. Introduction

Dear customer, thank you for purchasing this product.

You have acquired a product that has been built according to the current state of the art.

**CE** The product meets the requirements of the applicable European and national guidelines. The conformity with these requirements has been proven, and the corresponding declarations and documents are deposited with the manufacturer.

In order to ensure the product continues to meet these requirements, and to ensure safe operation, you as the user must observe these operating instructions.

#### 2. Safety instructions



**The guarantee and the warranty expire in the event of damage to the product caused by failure to observe these operating instructions. We are not liable for any consequential damage!**

**The same applies to property damage or personal injury caused by improper handling or failure to observe the safety instructions.**

- Unauthorised modifications or other changes to the product are not permitted. The guarantee and the CE approval expire in this event.
- Make sure that the light does not get into the hands of children. It is not a toy!
- Keep plastic film or other packaging material away from children, there is a risk of suffocation.
- This product is only suitable for private use!

#### 3. Intended Use

The solar module built into the upper part converts sunlight into electricity. The built-in battery is charged with this energy.

The light can be operated in three different modes depending on the time of year and the installation location. These operating modes can be conveniently selected using a button on the PIR sensor.

When the battery is empty, the light switches off automatically. If necessary, it can be charged via a USB port in poor sunlight or when it is first started up. The solar light is suitable for year-round outdoor use. The nighttime lighting duration is heavily dependent on the amount of sunlight and the angle of incidence on the solar module during the day. **Solar lights must always be placed in the sunlight without shadows. Operation on the north side or in the shade of trees or bushes is not recommended!**

#### 4. Installation

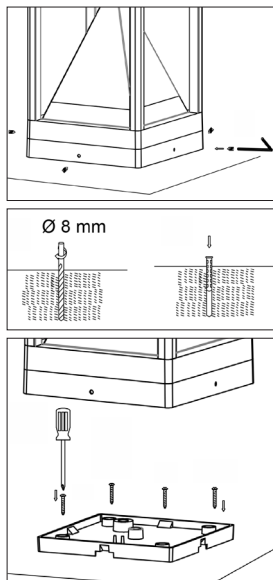
1. Carefully remove the parts from the packaging.
2. The light can either be set up freely or screwed onto a solid surface.

**Note:** Please note the detection range of the motion sensor!

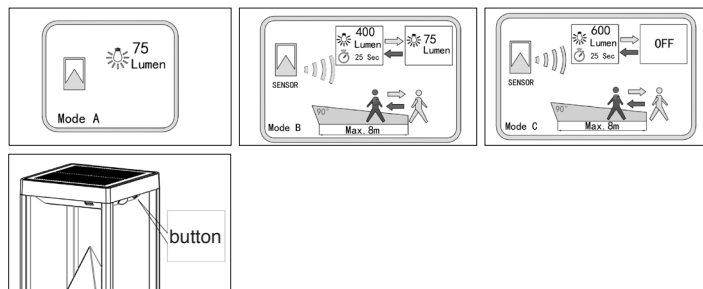
**When screwing, please proceed as follows:**

1. Use the Allen key supplied to unscrew the 4 Allen screws on the 4 sides of the base and remove the plastic cover.
2. Mark the 4 holes on the bottom and drill 4 holes with a diameter of 8 mm and insert the dowels. Now take the plastic cover and mount it with the enclosed 4 screws.
3. Now put the solar light back and screw the 4 Allen screws back into the case.

The light is now fully assembled!



3. 4 different operating modes can be selected using the button below the PIR sensor. Proceed as follows:



**Press button for 5 seconds:**

**Mode A:** The lamp always shines at 75 lm in the dark, PIR sensor is switched off!

**Press button for 1 second:**

**Mode B:** The lamp lights up dimmed at 75 lm in darkness, when moving the lamp lights up at 400 lm, 25 sec. after last movement the lamp lights up dimmed again at 75 lm.

**Press button for 1 second:**

**Mode C:** Lamp does not light up in the dark, in case of movement the lamp lights up again with 600 lm, 25 sec. after last movement!

**Press button for 5 seconds:**

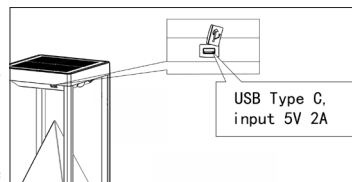
Lamp switched off, battery is still being charged!

**Note:** The duration of the light depends heavily on the intensity and duration of sunlight during the day. In the winter months, you can generally expect less lighting time. If the light does not light up on the first evening, please wait for a sunny day or charge it with the USB-connector (see point 5.)

#### 5. Charge via USB port

The battery in the light can be charged using a USB power supply unit before it is used for the first time, after wintering or during the darker months of the year. The charging cable is included in the scope of delivery, the USB power supply unit is an accessory and not included in the scope of delivery. The charging connection is located under a weatherproof cover in the upper part of the light.

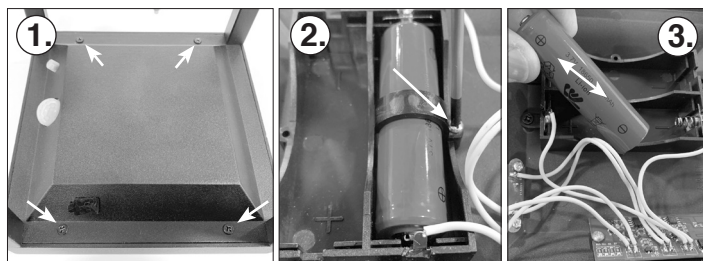
If the light is charged via a USB power supply unit, an LED inside the button lights up red. When the battery is charged, the light colour of the LED changes to green and the charging cable can be removed again. Close the connector cover. The light should be switched off during the charging process.



#### 6. Changing the battery

1. Press the button below the PIR sensor for 5 seconds and switch off the light.
2. Unscrew the 4 screws on the underside of the light with a suitable screwdriver (pic. 1) and remove the upper part.
3. Unscrew the battery holder (pic. 2) and remove it from the battery.
4. Take the battery out of the compartment and reinsert an identical battery with the correct polarity (pic. 3).
5. Now close the light again in reverse order and select the desired operating mode using the button.

**Note:** Used batteries or accumulators must be disposed of in an environmentally friendly manner and do not belong in the household waste. Your dealer is legally obliged to take back old batteries.



## 7. Malfunctions

### The light does not switch on in the dark

- An extraneous light source (e.g. street lamp) simulates daylight and prevents the light from being switched on. Place the light in a darker place

### The light does not switch on or only switches on briefly in the dark.

- Is the light switched on?
- Battery weak or defective? Charge via the USB port or replace the battery!

## 8. Technical specifications

Solar module:	6V/ 300 mA, 1.8 Wp crystalline
Light colour:	3000 K
Light intensity:	75 lm, 400 lm or 600 lm depending on the operating mode
Light source:	40 SMD LEDs
Lighting time:	max. 9 hours with a fully charged battery in operating mode 1 (lamp always lights up with 75 lm in the dark, PIR sensor is switched off!)
PIR-Sensor:	90°, max. 8 m (depends on the outside temperature)
Protection class:	IP 44
Protection class:	III
Battery pack:	1x Li-Ion 3,7 V/2200 mAh (18650)

## 9. Warning:

- Batteries do not belong in the hands of children. Never leave batteries lying around openly, there is a risk of them being swallowed by children or pets.
- Batteries must never be short-circuited, dismantled or thrown into fire. There is a risk of explosion!
- Leaking or damaged batteries can cause burns if they come into contact with the skin, so use suitable protective gloves in this case.
- When changing the batteries, only batteries of the same construction may be used. Under no circumstances should old batteries be used as they cannot be recharged.
- Make sure the polarity is correct when inserting or connecting the batteries.
- If the device is not used for a longer period of time (e.g. storage), remove the inserted batteries to avoid damage from leaking batteries.

## 10. Disposal:

Dear customer,

Proper disposal of old devices is mandatory!

Should you ever want to part with this article, please keep in mind that many of its components are made of valuable raw materials and can be recycled.

Therefore do not dispose of it in the garbage can, but rather please take it to your collection point for electrical devices.

Thank you for your help!



## Customer care:

If you have any problems or questions about this product, just contact us!

**esotec GmbH**, Industriegebiet Weberschlag 9, D-92729 Weiherhammer

Internet: **www.esotec.de**

Via phone: +49 9605-92206-0

By e-mail for spare parts **orders** : **ersatzteil@esotec.de**

By e-mail for questions about the product: **technik@esotec.de**

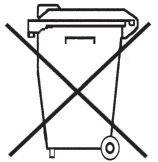
Internet: **www.esotec.de**

**Manufacturer Part Number: 102587**

## Battery disposal

Batteries must not be disposed of with the household waste. The consumer is legally obliged to return batteries after use, for example to public collection points or where such batteries are sold.

Batteries containing pollutants are marked with the symbol "crossed out garbage can" and one of the chemical symbols.



**Li-Ion**