

Operating Manual

LED Solar Lamp „Deko glass“



These instructions relate ONLY to this product and contain important information for using the product for the first time. Please keep these instructions for later reference and should always accompany the product in the event of transference to a new user.

1. Introduction

Dear Customer,

Thank you for purchasing the solar light.

With this solar light you purchased a product manufactured according to the current state of technology.

CE This product fulfils all requirements of the valid European and national regulations. The conformity was proved. The relevant declarations and documentation are deposited with the manufacturer.

To maintain this state and guarantee a safe operation, you as the user will have to follow this operating manual!

2. Safety Instructions



- In case of damages caused by not following this operating manual, the warranty rights will expire! We exclude liability for any consequential damages!
- We exclude liability for property or personal damages caused by inappropriate handling or not following the safety instructions.
- In these cases any guarantee rights will expire.

Due to safety and admission reasons (CE) it is not allowed to arbitrarily reconstruct and/or change the solar light.

Therefore, please keep to the operating manual.

The accident prevention rules of the association of the industrial trade cooperative association for electric plants and working material are to be considered in industrial environments

3. Intended use

The solar lamp is designed for outdoor use. The integrated rechargeable battery is charged via the solar cell in the lid of the lamp. The lamp is automatically switched on at darkness and switched out at the break of dawn. 2 powerful white light emitting diodes (LEDs) are used as light source. Those LEDs ensure a high luminosity with low power consumption. The light color may be switched between a white and a 7-color alternating light. This is done via a switch.

-- However, please note that the duration of illumination may be impaired in case of insufficient solar irradiation onto the solar module or during the winter months --

Note: In case of longer periods without solar irradiation, the accumulator won't be charged sufficiently in order to ensure a permanent operational readiness. But that doesn't mean that the solar light is defective. Wait for the next sunny days and the light will again work accordingly or charge the batteries in a commercially available battery charger.

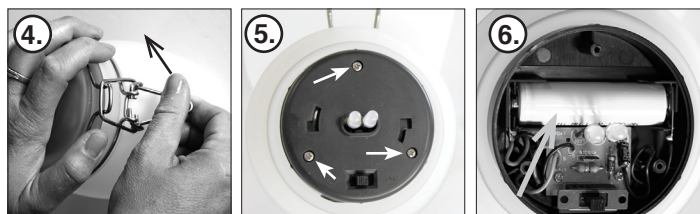
4. Putting into operation

1. Please carefully take all parts out of the package.
2. For safety sake, hold one hand onto the lid. This will avoid any damages of the lid when opening the jar. Now open the clasp of the lid by pulling the clamp forward (ill. 1).
3. Remove the clamp and open the lid of the canning jar (ill. 2).
4. Inside the lid you will find a slide switch. The lamp is switched off in the center position „OFF“. The white light is activated in position „ON2“ and the 7-color alternating light is activated in position „ON1“ (ill. 3). Now you can decorate the glass. For better illumination you can remove the reflector. So the light is stronger to illuminate your decoration.
5. Then close the lid and firmly press it onto the gasket. Now close the canning jar with the clasp.

Attention: Do not apply force when opening and closing the lamp. Danger of injury due to genuine glass!

The solar lamp is now activated.

Note: The duration of illumination is strongly dependent of the intensity and duration of sunshine during the day. During the winter months, the duration of illumination will generally be shorter. In case the light should not give light on the first evening, please wait for a sunny day.



5. Exchange of the rechargeable battery

1. For safety sake, hold one hand onto the lid (ill. 4). This will avoid any damages of the lid when opening the jar. Now open the clasp of the lid by pulling the clamp forward.
2. Remove the clamp and open the lid of the canning jar.
3. Put the slide switch into the center position.
4. Turn the reflector anticlockwise and remove it carefully.
5. Unscrew the 3 screws with an appropriate screwdriver and carefully remove the cover (ill. 5).
6. Take the used rechargeable battery out of the battery compartment and insert a new accumulator with correct polarity (ill. 6). We recommend charging the new accumulator in a charger before inserting it.
7. Now, re-assemble and close the lamp in reverse order.

Note: Used batteries or accumulators must be disposed of in a non-polluting way and do not belong into the domestic waste. Your dealer is required by law to take back old accumulators.

6. Malfunctions

-Lamp is not automatically switched on at darkness

- An outside light source (e.g. streetlight) simulates daylight and prevents the lamp from switching on. Place the lamp at a darker location.

Lamp is not switched on at darkness or only for a short period of time.

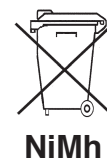
- Is the lamp connected?
- Accumulator weak or defective. Exchange of the accumulators.

7. Technical Data

- Solar module: 2 V/ 80 mA
- LED: 1 white LED (3500 K) and 1 x RGB LED
- Degree of protection: IP 44
- Protection class: III
- Battery: 1x NiMH 1.2 V/600 mAh (Micro AA)
- Luminosity period: Max. 6 hrs with full battery
- Working temperature: -20°C bis + 40°C

Battery Recycling:

- Used batteries or accumulators must be disposed in the domestic waste.
- The consumer is legally obliged to bring back old accumulators upon usage, e.g. to public waste collecting locations or to the place (shops, etc.) where those batteries are sold.
- Batteries that contain harmful substances are marked with the "strike through dustbin" and one of the chemical symbols.



Manufacturer - Spare parts

esotec GmbH - Weberschlag 9 - D-92729 Weiherhammer
Tel.-Nr: +49 9605-92206-0 Fax.-Nr: +49 9605-92206-10
e-mail: info@esotec.de Internet: www.esotec.de

Manufacturer Part- Nr: 102077

Rechargeable battery notes

- Rechargeable batteries should not be played with by children. Never leave rechargeable batteries lying around; they could be swallowed by children or pets.
- Rechargeable batteries must never be short-circuited, disassembled or thrown into fire. This leads to a danger of explosion!
- Leaking or damaged rechargeable batteries can cause chemical burns when they come into contact with skin. For this reason, please make use of suitable protective gloves.
- Rechargeable batteries should only be replaced by structurally identical rechargeable batteries from the same manufacturer. Normal batteries must not be used since these are not rechargeable.
- Make sure the rechargeable batteries are inserted with the correct polarity.
- For long periods of time of non-use (for example, storage), remove the inserted rechargeable batteries to avoid damages via the leaking rechargeable batteries.

Disposal:

Dear customer,

please cooperate in avoiding waste. When you intend to dispose of the product in future, please consider that it contains valuable raw materials suited for recycling.

Therefore, do not dispose it of with domestic waste but bring it to a collection point for the recycling of waste electrical and electronic equipment.

Thank you very much for your cooperation!



Copyright, esotec GmbH