

# Operating Manual

## Deco Solar light "Puc Light"



These instructions relate **ONLY** to this product and contain important information for using the product for the first time. Please keep these instructions for later reference and should always accompany the product in the event of transference to a new user.

### 1. Introduction

Dear Customer,

Thank you for purchasing the solar light.

With this solar light you purchased a product manufactured according to the current state of technology.

**CE** This product fulfils all requirements of the valid European and national regulations. The conformity was proved. The relevant declarations and documentation are deposited with the manufacturer.

To maintain this state and guarantee a safe operation, you as the user will have to follow this operating manual!

### 2. Safety Instructions



- In case of damages caused by not following this operating manual, the warranty rights will expire! We exclude liability for any consequential damages!
- We exclude liability for property or personal damages caused by inappropriate handling or not following the safety instructions.
- In these cases any guarantee rights will expire.

Due to safety and admission reasons (CE) it is not allowed to arbitrarily reconstruct and/or change the solar light.

Therefore, please keep to the operating manual.

The accident prevention rules of the association of the industrial trade cooperative association for electric plants and working material are to be considered in industrial environments

### 3. Intended use

The solar light is designed for outdoor use. The integrated rechargeable battery is charged by a solar cell in the upper part of the light. The lamp is automatically switched on at darkness and switched out at the break of dawn. A powerful light emitting diode (LED) is used as light source. This ensures a high luminous intensity with little power consumption.

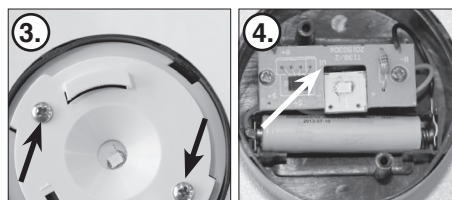
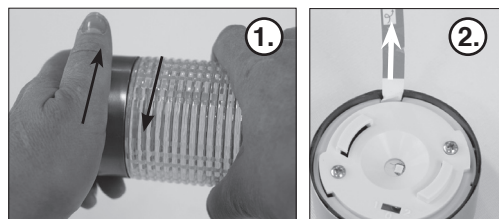
**Note:** In case of longer periods without solar irradiation, the battery won't be charged sufficiently in order to ensure a permanent readiness for operation. **However, that doesn't mean that the solar light is defective.** Wait for the next sunny days and the light will again work accordingly. -- **However, please note that the duration of illumination may decrease due to a lack of sunshine as well as in the winter months--**

### 4. Putting into operation

1. Please carefully take the parts out of the package.
2. Carefully insert the ground spike into the hole on the bottom part of the solar light.
3. Unscrew the head of the solar light anti-clockwise (illustration 1) and carefully pull out the strip on the battery (illustration 2).
4. Reattach the head of the light onto the bottom part and screw it tight clockwise.  
**Note:** Please do not apply force when doing that.

**The solar light is now activated.**

**Note:** The duration of illumination is strongly dependent on the intensity and duration of sunshine during the day. During the winter months the duration of illumination will generally be shorter. If the lamp should not irradiate on the first evening, please wait for a sunny day.



### 5. Exchange of the rechargeable battery

On average, batteries of solar lights have to be exchanged every two years. Please only insert a new and identical in construction battery 1.2 V/ 400 mAh Micro (AAA). In case you should not be able to get those batteries in the shops, you may also use batteries with a higher capacity.

1. Unscrew the light head anti-clockwise from the light body and remove it (illustration 1).
2. Unscrew the two screws with an adequate screwdriver and remove the lid (illustration 3).
3. Remove the battery from the battery compartment by means of a screwdriver (illustration 4).
4. Insert a new battery into the battery compartment with correct polarity. It is recommended to charge the new battery by means of a battery charger before inserting it.
5. Now reassemble the light in reverse order and make sure that the lid sits correctly.

**Note:** Used batteries or accumulators must be disposed of in a non-polluting way and do not belong into the domestic waste. Your dealer is required by law to take back old accumulators.

### 6. Malfunctions

- **Lamp is not automatically switched on at darkness**
- An outside light source (e.g. streetlight) simulates daylight and prevents the lamp from switching on? Place the lamp at a darker location.
- **Lamp is not switched on at darkness or only for a short period of time.**
- Is the lamp connected?
- Accumulator weak or defective. Exchange of the accumulators.

### 7. Technical Data

- Solar module: 0,06 Wp crystalline Silicon
- Lighting color: 2800 K (warm white)
- Light intensity: 2 lm
- Light emitting diode: 1 light emitting diodes (LED)
- Duration of illumination: max. 8 hours in case of fully charged set of accumulators
- Degree of protection: IP 44
- Protection class: III
- Set of accumulators: 1 x NiMh 1.2 V/400 mAh (AAA size)

### Battery Recycling:

- Used batteries or accumulators must be disposed in the domestic waste.
- The consumer is legally obliged to bring back old accumulators upon usage, e.g. to public waste collecting locations or to the place (shops, etc.) where those batteries are sold.
- Batteries that contain harmful substances are marked with the "strike through dustbin" and one of the chemical symbols.



**NiMh**

### Rechargeable battery notes

- Rechargeable batteries should not be played with by children. Never leave rechargeable batteries lying around; they could be swallowed by children or pets.
- Rechargeable batteries must never be short-circuited, disassembled or thrown into fire. This leads to a danger of explosion!
- Leaking or damaged rechargeable batteries can cause chemical burns when they come into contact with skin. For this reason, please make use of suitable protective gloves.
- Rechargeable batteries should only be replaced by structurally identical rechargeable batteries from the same manufacturer. Normal batteries must not be used since these are not rechargeable.
- Make sure the rechargeable batteries are inserted with the correct polarity.
- For long periods of time of non-use (for example, storage), remove the inserted rechargeable batteries to avoid damages via the leaking rechargeable batteries.

### Manufacturer/Importer:

esotec GmbH, Weberschlag 9, D-92729 Weiherhammer  
Tel.-Nr: +49 9605-92206-0 Fax.-Nr: +49 9605-92206-10  
e-mail: info@esotec.de Internet: www.esotec.de

**Mnufacturer item-Nr: 102608**

### Disposal:

Dear customer,  
please cooperate in avoiding waste. When you intend to dispose of the product in future, please consider that it contains valuable raw materials suited for recycling.

Therefore, do not dispose it of with domestic waste but bring it to a collection point for the recycling of waste electrical and electronic equipment.

Thank you very much for your cooperation!  
Copyright, esotec GmbH

