

Using Instructions

Solar LED Snowman „Freddy“

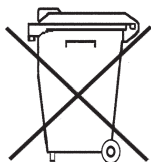


Customer support:

If you have problems or questions regarding this product, simply contact us!
esotec GmbH, Industriegebiet Weberschlag 9, D-92729 Weiherhammer
Monday to Friday 9 am to 12 noon and 1 pm to 4 pm.
By phone: 09605-92206-0
By e-mail for ordering spare parts: ersatzteil@esotec.de
By e-mail for questions about the product: technik@esotec.de

Battery take-back

- Batteries must not be discarded into domestic waste.
- The consumer is legally required to return batteries after use, e.g. to public collecting centers or to battery distributors.
- Contaminant-containing batteries are labeled with the sign "crossed-out trashcan" and one of the chemical symbols. Used batteries should be disposed environmentally friendly and should not be discarded into domestic waste. Your dealer is legally required to take back old batteries.



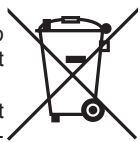
Li-Ion

Rechargeable battery notes

- Rechargeable batteries should not be played with by children. Never leave rechargeable batteries lying around; they could be swallowed by children or pets.
- Rechargeable batteries must never be short-circuited, disassembled or thrown into fire. This leads to a danger of explosion!
- Leaking or damaged rechargeable batteries can cause chemical burns when they come into contact with skin. For this reason, please make use of suitable protective gloves.
- Rechargeable batteries should only be replaced by structurally identical rechargeable batteries from the same manufacturer. Normal batteries must not be used since these are not rechargeable.
- Make sure the rechargeable batteries are inserted with the correct polarity.
- For long periods of time of non-use (for example, storage), remove the inserted rechargeable batteries to avoid damages via the leaking rechargeable batteries.

Disposal:

Dear customer,
please cooperate in avoiding waste. When you intend to dispose of the product in future, please consider that it contains valuable raw materials suited for recycling. Therefore, do not dispose it of with domestic waste but bring it to a collection point for the recycling of waste electrical and electronic equipment.



Thank you very much for your cooperation!

1. Introduction

Dear customer, we thank you for purchasing the Solar Globelight. With this Solar Light you have purchased a product that complies with the latest and most up-to-date technology.

This product complies with the European and National Standards.

The relevant certificates of conformity are deposited with the manufacturer.

To preserve this standard and in order to maintain safety you must adhere to the use instructions!

2. Security Instructions

In the event of any problems arising or damage occurring from not following these instructions, the warranty is deemed cancelled. The manufacturer will not be held responsible for any claims or damages arising from the misuse of this product.

For safety reasons and in order to maintain standards (CE) you are prohibited from altering or changing any component in the product.

- Please follow the instructions very carefully.
- For commercial applications due care and attention must be paid to the Health and Safety Standards in your jurisdiction.



3. Operation and intended use

The solar light as well as the solar module are designed for year-round outdoor use.

Keep the solar module snow-free during the winter months to ensure proper operation. If possible, the solar module should face South and be placed in a shade-free area. North sides (of buildings, etc.) are not suitable for solar products. The light colour of the Snowman has two different settings. The built-in rechargeable battery pack is charged by the external solar cell. The light automatically switches on at dusk and switches off at dawn. Light is produced by high-performance LEDs (light-emitting diodes). These LEDs guarantee high luminosity at a low rate of power consumption and a lifetime of over 50,000 hours. Don't put the lighting ball on a water surface!

Note: The battery may be insufficiently charged by sunlight if longer periods without sunlight occur. **This does not mean, however, that the solar light is faulty.** Simply wait for the next sunny day and the light will work once again.

As a rule, the battery pack should be replaced once every 2 years!

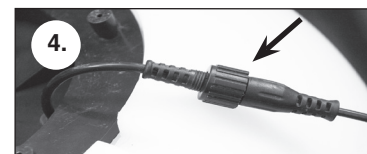
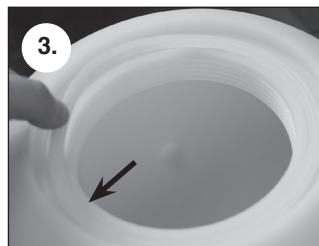
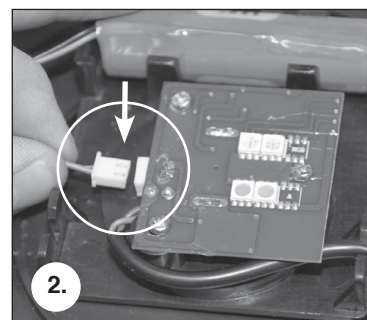
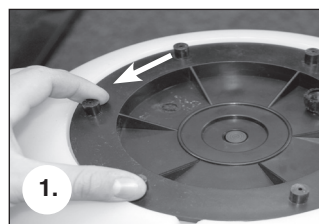
4. Using the light for the first time

1. Carefully remove the parts from the packaging.
2. Screw the base carefully in a counter-clockwise direction (Figure 1).
3. Plug the connector from the battery pack into the socket on the circuit board (Figure 2).

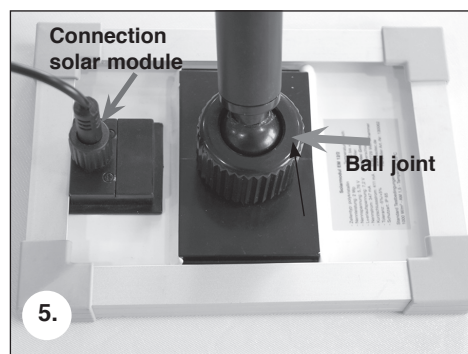
Caution: Once the connector is plugged in, the LEDs start to light up. To avoid damage to the eyes, do not look directly at the light.

Note: The plug connector is touch-safe and protected against inverse polarity. Do not use excessive force when inserting the connector.

4. Screw the base clockwise back onto the Snowman. Ensure that the seal is in the correct position (Figure 3).



5. Now take the solar module cable and insert the connector into the socket of the solar light extension cable and screw the union nut tight (Figure 4).
6. Now find a sunny spot within reach of the cable to place the solar module.
7. Plug the connector on the other end of the cable into the socket at the back of the solar module and screw the union nut tight (Figure 5).



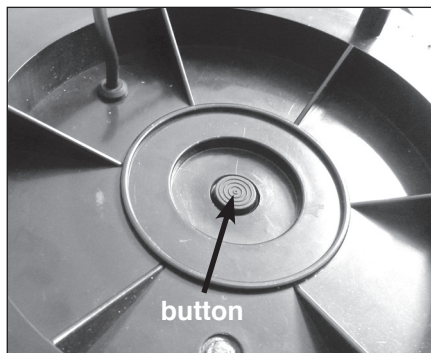
Note: The light should now be dark during daylight. The solar module also has a twilight sensor function. If the solar module is in darkness, then the voltage of the solar module drops and the light will switch on automatically.

8. The solar module can be placed on the ground using the ground spike. The position of the spherical joint can be adjusted for best alignment towards the sun.

Note: Illumination time is highly dependent on the intensity and duration of sunlight (solar irradiation) during the day. Illumination time is generally expected to be less during the winter months. Should the light not switch on on the first evening, please wait for a sunny day.

5. Colour setting

The light has 2 different colour settings. These are selected using the button underneath the light (Centre). Press the button to select the option you want.



1. Light color changes every minute

The light color changes every minute slowly between every color.

2. Fix the lighting color

When you want to fix the lighting color to permanent light, please press the switch on the bottom of the light. To start color changing please push the switch again.

6. Replacing the battery pack

As a rule, the battery pack must be replaced every 2 years with a new one of the same size and type. It is a 3.7V/ 650mAh or 3.7V/ 1800mAh lithium-ion battery. Replacement batteries are obtainable from your dealer or the manufacturer.

The following is the correct procedure for replacing the battery:

1. Loosen the connections at the bottom of the lamp.
2. Rotate the bottom of the snow man counter-clockwise.
3. Remove the battery pack connector plug from the circuit board (Figure 1) and remove the used battery from its bracket (Figure 2).
4. Replace the battery with a new, identical battery and connect the plugs (Figure 3).
5. Close the lamp in the reverse order used to open it, and remember to reconnect the solar module cable.

Note: Used batteries, whether rechargeable or not, must be disposed of in an environmentally friendly manner and should not be disposed of in domestic rubbish bins. Your dealer is obliged by law to accept old batteries for disposal.

7. Troubleshooting

Lamp does not switch on at nightfall.

- An ambient light source (e.g. street light) simulates natural light in the solar module and prevents the light from switching on automatically. Place the solar module in a darker place.

Lamp does not switch on at nightfall, or switches on only briefly.

- Check the connector plugs on the solar module cable and battery are properly connected.
- Battery is weak or faulty. Replace the battery at least once every 2 years.

8. Technical data

Solarpanel:

Solar panel:	2 Wp crystalline
Nominal voltage:	5.76 V
Nominal current:	347 mA
IP Rating:	IP 65
Temperature range:	-30°C to +70°C

Snowman:

Lamps:	LED 's
Luminescent white:	4500 K
Light material:	PE
IP Rating:	IP 65
Protection class:	III
Temperature range:	-10°C to +40°C
Charge time until fully charged:	Approx. 6 hours in full sunshine
Illumination time when fully charged:	Up to 20 hours

Battery pack (Lilon): 3.7 V / 1800 mAh, spare part No.: 901004
www.esotec.de

Copyright esotec GmbH

