

Using Instructions LED Solar hanging lights „Smart Sticks“



Customer support:

If you have problems or questions regarding this product, simply contact us!

By phone: +49 9605-92206-0

By e-mail for ordering spare parts: ersatzteil@esotec.de

By e-mail for questions about the product: technik@esotec.de

Product: Manufacturer Item No.: 102117

These instructions relate **ONLY** to this product and contain important information for using the product for the first time. Please keep these instructions for later reference and should always accompany the product in the event of transference to a new user.

1. Introduction

Dear Customer,

Thank you for purchasing the solar light. With this solar light you purchased a product manufactured according to the current state of technology.



This product fulfils all requirements of the valid European and national regulations. The conformity was proved. The relevant declarations and documentation are deposited with the manufacturer.

To maintain this state and guarantee a safe operation, you as the user will have to follow this operating manual!

2. Safety Instructions



- In case of damages caused by not following this operating manual, the warranty rights will expire! We exclude liability for any consequential damages!
- We exclude liability for property or personal damages caused by inappropriate handling or not following the safety instructions.

- In these cases any guarantee rights will expire.

Due to safety and admission reasons (CE) it is not allowed to arbitrarily reconstruct and/or change the solar light.

Therefore, please keep to the operating manual.

The accident prevention rules of the association of the industrial trade cooperative association for electric plants and working material are to be considered in industrial environments.

3. Intended use

The solar pendant lamps constitute an atmospheric and effect lighting for the garden.

A solar module is installed in the upper part of the lamp. This module charges the integrated rechargeable battery during sunlight. The integrated energy-saving white light emitting diode switches on automatically as soon as it gets dark and provides for an atmospheric lighting at no charge.

The maximum light ON time of the lighting with a fully charged battery amounts to approximately 8 hours. The lamp is designed splashproof and must not be immersed in the water or exposed to a high water pressure (e.g. high-pressure cleaner or splashing with the garden hose). The product is suitable for year-round outdoor use.

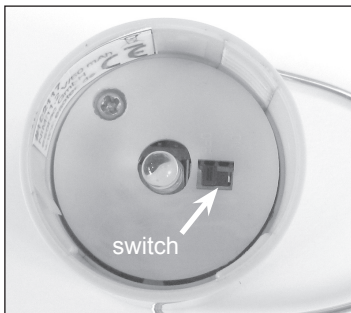
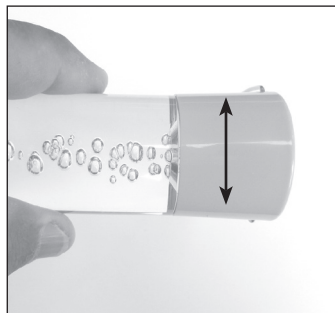
Note: During the winter months the duration of illumination will generally be shorter. If the lamp should not yet start working on the first evening, please wait for a sunny day.

Note: When selecting the mounting location, please note that the solar module is shadow-free in a sunny position. Only then an optimal charging of the battery is guaranteed!

4. Putting into operation

1. Please carefully take the lamp out of the package.
2. Carefully turn the top part anticlockwise and remove it from the upper part.
3. Slide the switch into the position „ON“
4. Reattach the top part onto the upper part and screw it tight clockwise.

The lamp is now activated!



5. Exchange of the rechargeable battery

After two to three years the capacity of the battery will decrease and it must be replaced. Since the battery has been permanently installed (soldered) for structural reasons, a simple tool-free exchange is not possible here.

In this case, please contact us.

Note: Spent batteries must be disposed off in an environmental-friendly way and should not be thrown into the dustbin. Your dealer is legally obliged to take back the old batteries.

6. Malfunction

Lamp does not switch on at night

- An external filament (e.g. street lights) simulates natural light on the solar module and prevents the lamp from switching on. Place the lamp in a darker place.
- The positioning of the lamp poor? The solar module must be installed shade-free from the sun. It needs direct sunshine!

7. Technical data

- Solar module: amorphous silicone
- Degree of protection: IP 44
- Protection class: III
- Battery: 1 NiMh 1.2 V/60 mAh
- Lamp: 1 x LED 2800 K (warm white)
- Luminosity period: Max. 8 hrs. with full battery

Manufacturer / Importer

esotec GmbH - Gewerbegebiet Weberschlag 9 - D-92729 Weiherhammer

Tel.-Nr: +49 9605-92206-0

Fax.-Nr: +49 9605-92206-10

Internet: www.esotec.de

WEEE-Nr: DE 59284711

Disposal:

Dear customer,

please cooperate in avoiding waste. When you intend to dispose of the product in future, please consider that it contains valuable raw materials suited for recycling.

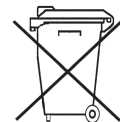
Therefore, do not dispose it of with domestic waste but bring it to a collection point for the recycling of waste electrical and electronic equipment.

Thank you very much for your cooperation!



Battery take-back

- Batteries must not be discarded into domestic waste.
- The consumer is legally required to return batteries after use, e.g. to public collecting centers or to battery distributors.
- Contaminant-containing batteries are labeled with the sign "crossed-out trashcan" and one of the chemical symbols. Used batteries should be disposed environmentally friendly and should not be discarded into domestic waste. Your dealer is legally required to take back old batteries.



NiMh

Copyright: esotec GmbH