

Usage instructions

Solarlight "Padua"



These instructions relate ONLY to this product and contain important information for using the product for the first time. Please keep these instructions for later reference and should always accompany the product in the event of transference to a new user.

1. Introduction

Dear Customer,

Thank you for purchasing the solar light.

With this solar light you purchased a product manufactured according to the current state of technology.

CE This product fulfils all requirements of the valid European and national regulations. The conformity was proved. The relevant declarations and documentation are deposited with the manufacturer.

To maintain this state and guarantee a safe operation, you as the user will have to follow this operating manual!

2. Safety Instructions



- In case of damages caused by not following this operating manual, the warranty rights will expire! We exclude liability for any consequential damages!
- We exclude liability for property or personal damages caused by inappropriate handling or not following the safety instructions.
- In these cases any guarantee rights will expire.

Due to safety and admission reasons (CE) it is not allowed to arbitrarily reconstruct and/or change the solar light.

Therefore, please keep to the operating manual.

The accident prevention rules of the association of the industrial trade cooperative association for electric plants and working material are to be considered in industrial environments

3. Usage in Accordance with Requirements

The solar light is constructed for the outdoor usage and operation. The integrated accumulator is charged by the solar cell in the upper part of the light. At darkness, the light is automatically switched on and is switched out at sunrise. As light source, a strong light emitting OSRAM diode (LED) is installed. These LED guarantee a strong luminosity with only low power consumption.

-- However, please note that the duration of illumination may decrease due to a lack of sunshine as well as in the winter months--

In case of longer periods without sunshine (insolation) the accumulator is charged only insufficiently and is thus not able to guarantee a permanent readiness for operation. However, this does not indicate that the solar light is defect. Please wait for the next sunny days and the light will again be working accordingly

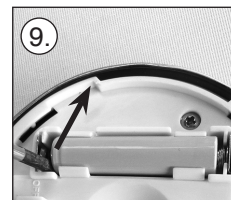
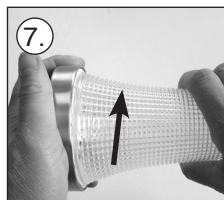
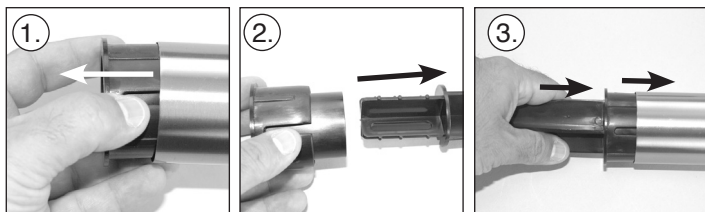
4. Initiation

1. Please carefully take all parts out of the package.
2. Take out the plastic part (pic. 1) in the end of the metal tube. Take the two plastic parts apart (pic. 2) and press the ground stick into the plastic part. Press the plastic part with ground stick into the tube (pic. 3).
3. Hold the upper part and screw off the lower part of the lamp head and take apart (pic. 4+5) the parts. Pull out the safety flap from the battery (pic. 6). Take the two parts together again, take both stainless steel tube and light head together.
4. Please carefully connect the earth rod with the bar and insert it into the ground.

Note: Please do not use force.

The solar light is now activated.

Note: The duration of illumination is strongly dependent on the intensity and duration of sunshine during the day. During the winter months the duration of illumination will generally be shorter. If the lamp should not irradiate on the first evening, please wait for a sunny day.



5. Exchange of Accumulator

1. Hold the upper part and screw off the lower part (pic. 7) of the lamp head and take apart (pic. 8) the parts.
2. Take the used accumulator out of the battery compartment (pic. 9) and insert a new accumulator according to polarity, into the battery compartment. It is recommended to charge the new accumulator in a battery charger before inserting them.
3. Re-assemble the lamp in reverse order.

Note: Used batteries or accumulators must be disposed of in a non-polluting way and do not belong into the domestic waste. Your dealer is legally obliged to take back and recycle old accumulators.

6. Malfunctions

-Lamp is not automatically switched on at darkness

- An outside light source (e.g. streetlight) simulates daylight and prevents the lamp from switching on. Place the lamp at a darker location.

Lamp is not switched on at darkness or only for a short period of time.

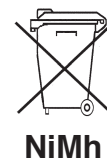
- Battery safetyflap drawn?
- Accumulator weak or defective. Exchange of the accumulators.

7. Technical Data

- Solar module: 270 mWp crystalline
- LED: OSRAM LED
- Light angle: 120°
- Light color: 2800 K (warmwhite)
- Light intensity: 10 lm
- Degree of protection: IP 44
- Protection class: III
- Battery: 1x NiMh 1.2 V/600 mAh (Micro AAA)
- Luminosity period: Max. 8 hrs with full battery
- Working temperature: -20°C bis + 40°C

Battery Recycling:

- Used batteries or accumulators must be disposed in the domestic waste.
- The consumer is legally obliged to bring back old accumulators upon usage, e.g. to public waste collecting locations or to the place (shops, etc.) where those batteries are sold.
- Batteries that contain harmful substances are marked with the "strike through dustbin" and one of the chemical symbols.



Manufacturer - Spare parts

esotec GmbH - Weberschlag 9 - D-92729 Weiherhammer
Tel.-Nr: +49 9605-92206-0 Fax.-Nr: +49 9605-92206-10
e-mail: info@esotec.de Internet: www.esotec.de

Manufacturer Part- Nr: 102479

Rechargeable battery notes

- Rechargeable batteries should not be played with by children. Never leave rechargeable batteries lying around; they could be swallowed by children or pets.
- Rechargeable batteries must never be short-circuited, disassembled or thrown into fire. This leads to a danger of explosion!
- Leaking or damaged rechargeable batteries can cause chemical burns when they come into contact with skin. For this reason, please make use of suitable protective gloves.
- Rechargeable batteries should only be replaced by structurally identical rechargeable batteries from the same manufacturer. Normal batteries must not be used since these are not rechargeable.
- Make sure the rechargeable batteries are inserted with the correct polarity.
- For long periods of time of non-use (for example, storage), remove the inserted rechargeable batteries to avoid damages via the leaking rechargeable batteries.

Disposal:

Dear customer, please cooperate in avoiding waste. When you intend to dispose of the product in future, please consider that it contains valuable raw materials suited for recycling.

Therefore, do not dispose it of with domestic waste but bring it to a collection point for the recycling of waste electrical and electronic equipment.

Thank you very much for your cooperation **Copyright, esotec GmbH**

