

Operating Instructions

LED Solar Lamp "Shine" Duo color



These instructions relate **ONLY** to this product and contain important information for using the product for the first time. Please keep these instructions for later reference and should always accompany the product in the event of transference to a new user.

1. Introduction

Dear Customer,

Thank you for purchasing the solar light.

With this solar light you purchased a product manufactured according to the current state of technology.

CE This product fulfils all requirements of the valid European and national regulations. The conformity was proved. The relevant declarations and documentation are deposited with the manufacturer.

To maintain this state and guarantee a safe operation, you as the user will have to follow this operating manual!

2. Safety Instructions



- In case of damages caused by not following this operating manual, the warranty rights will expire! We exclude liability for any consequential damages!
- We exclude liability for property or personal damages caused by inappropriate handling or not following the safety instructions.
- In these cases any guarantee rights will expire.

Due to safety and admission reasons (CE) it is not allowed to arbitrarily reconstruct and/or change the solar light.

Therefore, please keep to the operating manual.

The accident prevention rules of the association of the industrial trade cooperative association for electric plants and working material are to be considered in industrial environments

3. Usage in Accordance with Requirements

The solar light is designed for outdoor use. The built-in battery is charged by the solar cell in the upper part of the lamp. At twilight, the light switches on automatically and switches off again at dawn. Two high-power LEDs are used as the light source. These LEDs guarantee high luminosity and low power consumption. The light colour can be selected between cold white or warm white via a switch.

Please note, however, that if there is little sunlight on the solar module and during the winter months, the duration of the light will be reduced.

However, this does not mean that the solar lamp is defective. Wait for the next few days of sunshine and the light will work again.

-- However, please note that the duration of illumination may decrease due to a lack of sunshine as well as in the winter months--

In case of longer periods without sunshine (insolation) the batteries is charged only insufficiently and is thus not able to guarantee a permanent readiness for operation. However, this does not indicate that the solar light is defect. Please wait for the next sunny days and the light will again be working accordingly

4. Putting into Operation

1. Please carefully take the parts out of the package.
2. Take the lamp into your hand as shown in the illustration. Slightly press in the stainless steel plate at the bottom side (illustration 1.) and take off the upper part (illustration 2.).

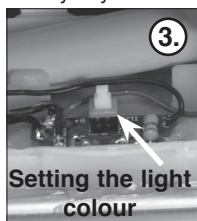
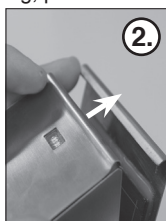
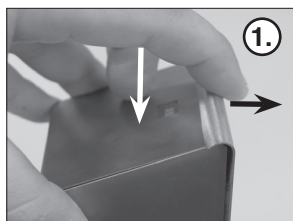
Note: Please do not apply any force when doing so.

3. Now open the battery compartment by slightly pressing the locking device of the battery compartment. Pull the security slip on the battery out. The switch is used to select the light color is selected between warm or cold white (illustration 3). But the solar module has to be covered for this purpose.

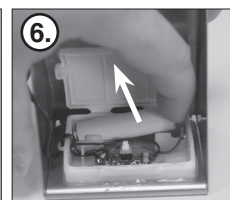
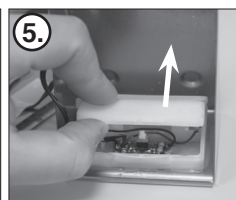
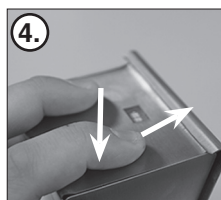
4. The supplied assembly material (screw and dowel) is used to mount the lamp on a wall or similar. Now close the lamp in reverse order.

The solar lamp is now activated.

Note: The duration of illumination/light ON time strongly depends on the intensity and duration of the solar irradiation during the day. During the winter months please generally expect a shorter light ON time. If the lamp should not shine on the first evening, please wait for a sunny day.



Setting the light colour



5. Exchange of the rechargeable Battery

In case of solar lamps, the battery have to be change every 2 years on average. Please insert a new and identical in construction 1.2 V/ 600 mAh Mignon (AA) rechargeable battery. In case you should not be able to find this capacity at your retailer's, you may also use a battery with a higher capacity.

1. Take the lamp into your hand as shown in the illustration. Slightly press in the stainless steel plate at the bottom side (illustration 4.) and take off the upper part (illustration 5.)
2. Now open the battery compartment by slightly pressing the locking device of the battery compartment. (illustration 5).
3. Take the battery out of the battery compartment by means of a screwdriver (illustration 6).
4. Insert the new battery into the battery compartment with correct polarity. It is recommended to charge the battery in a battery charger before inserting it.
5. Now close the lamp in reverse order.

6. Malfunctions

-Lamp is not automatically switched on at darkness

- An outside light source (e.g. streetlight) simulates daylight and prevents the lamp from switching on. Place the lamp at a darker location.

- Lamp is not switched on at darkness or only for a short period of time.

- Is the lamp connected?

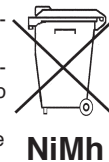
- Accumulator weak or defective. Exchange of the accumulators.

7. Technical Data

- Solar module: Amorphous 0.2 Wp
- Light colour: 6500 K (cold white) or 2800 K (warm white)
- Luminous intensity: cold white: 8lm / warm white: 6 lm
- Illuminant: 2 LEDs
- Flashing time: max. 8h with full battery
- Protection class: IP 34
- Protection class: III
- Battery pack: 1 x NiMh 1.2 V / 600 mAh (Mignon, AA)

Battery Recycling:

- Used batteries or accumulators must be disposed in the domestic waste.
- The consumer is legally obliged to bring back old accumulators upon usage, e.g. to public waste collecting locations or to the place (shops, etc.) where those batteries are sold.
- Batteries that contain harmful substances are marked with the "strike through dustbin" and one of the chemical symbols.



Rechargeable battery notes

- Rechargeable batteries should not be played with by children. Never leave rechargeable batteries lying around; they could be swallowed by children or pets.
- Rechargeable batteries must never be short-circuited, disassembled or thrown into fire. This leads to a danger of explosion!
- Leaking or damaged rechargeable batteries can cause chemical burns when they come into contact with skin. For this reason, please make use of suitable protective gloves.
- Rechargeable batteries should only be replaced by structurally identical rechargeable batteries from the same manufacturer. Normal batteries must not be used since these are not rechargeable.
- Make sure the rechargeable batteries are inserted with the correct polarity.
- For long periods of time of non-use (for example, storage), remove the inserted rechargeable batteries to avoid damages via the leaking rechargeable batteries.

Manufacturer/Importer:

esotec GmbH, Webersschlag 9, D-92729 Weiherhammer
Tel.-Nr: +49 9605-92206-0 Fax.-Nr: +49 9605-92206-10
e-mail: info@esotec.de Internet: www.esotec.de

Mnufacturer item-Nr: 102116

Disposal:

Dear customer,
please cooperate in avoiding waste. When you intend to dispose of the product in future, please consider that it contains valuable raw materials suited for recycling.

Therefore, do not dispose it of with domestic waste but bring it to a collection point for the recycling of waste electrical and electronic equipment.

Thank you very much for your cooperation!



Copyright, esotec GmbH