

Using Instructions

Solar LED Alu-Wireball



These instructions relate **ONLY** to this product and contain important information for using the product for the first time. Please keep these instructions for later reference and should always accompany the product in the event of transference to a new user.

1. Introduction

Dear Costumer,

Thank you for purchasing the solar light. With this solar light you purchased a product manufactured according to the current state of technology.

This product fulfils all requirements of the valid European and national regulations. The conformity was proved. The relevant declarations and documentation are deposited with the manufacturer.

To maintain this state and guarantee a safe operation, you as the user will have to follow this operating manual!

2. Safety Instructions



- In case of damages caused by not following this operating manual, the warranty rights will expire! We exclude liability for any consequential damages!
- We exclude liability for property or personal damages caused by inappropriate handling or not following the safety instructions.

- In these cases any guarantee rights will expire.

Due to safety and admission reasons (CE) it is not allowed to arbitrarily reconstruct and/or change the solar light.

Therefore, please keep to the operating manual.

The accident prevention rules of the association of the industrial trade cooperative association for electric plants and working material are to be considered in industrial environments.

3. Intended Use and Function

The LED wire ball is automatically switched on at darkness and switched off at morning light. With a fully charged battery and without recharging, the maximum light ON time of the lighting amounts to approx. 10 hours. The solar module installed in the upper part of the housing charges the integrated rechargeable battery. The LED wire ball is switched on and off via a switch. The LED wire ball is designed in IP 44 (splashproof) and protection class III and is suitable for year-round outdoor operation. The wire ball is made of aluminum wire.

Note: Please make sure that the wire ball is never lying in the water.

Note: Please make sure that the solar module is preferably directed to the south and that shadows are avoided. The product can not be used when directed to a north side. The solar module shall always be free from snow during the winter.

4. Start-up

1. Please carefully take all parts out of the package.
2. In case the wire ball should not be really round due to transport or storage, you may deform it slightly with your hands.
3. For permanent light, switch the toggle switch on the bottom side of the solar module to the position "C" or position "B" for flashing light.

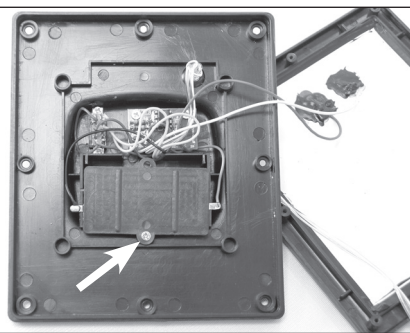
Note: The LED wire ball is switched off in position „OFF“ and the battery is not charged.

4. The control unit may be inserted into the ground by means of the ground spike or screwed to the floor or wall by means of the bracket.

The solar LED wire ball is now activated!

Note: The maximum illumination time in wintertime is normally somewhat reduced. Should the solar lights not illuminate in the first evening, wait for a sunny day.

1.



5. Exchange of the rechargeable Battery

The capacity of the battery will diminish after one to two years and it will have to be exchanged. The battery is available at your local retailer's or from the manufacturer. Please exclusively use an identical in construction battery.

1. Put the switch on the bottom side into the position „OFF“
2. Unscrew the 8 screws on the bottom part of the housing and remove the lid.
2. Loosen the screw on the battery compartment lid and remove the lid (illustration 1).
3. Remove the battery from the holder.
4. Insert the new battery with correct polarity and close the housing in reverse order.
5. Now put the switch to the position "C" or position "B" for flashing light.

6. Malfunctions

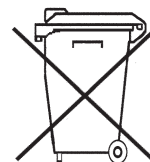
- **Lamp is not automatically switched on at darkness**
- An outside light source (e.g. streetlight) simulates daylight and prevents the lamp from switching on. Place the solar module at a darker location.
- **Lamp is not switched on at darkness or only for a short period of time.**
- Is the lamp connected?
- Accumulator weak or defective. Exchange of the accumulators.

7. Technical Data

- Solar module: crystalline, 1 Wp
- Rechargeable battery: NiMh 1.2 V/2000 mAh, Mignon (AA)
- Protection type: IP 44
- Protection class: III
- Illuminant: 50 warm white LEDs (light color: 3000 K)
- Light time: max. 10 h with a fully charged battery

Battery take-back

- Batteries must not be discarded into domestic waste.
- The consumer is legally required to return batteries after use, e.g. to public collecting centers or to battery distributors.
- Contaminant-containing batteries are labeled with the sign "crossed-out trashcan" and one of the chemical symbols. Used batteries should be disposed environmentally friendly and should not be discarded into domestic waste. Your dealer is legally required to take back old batteries.



NiMh

Manufacturer/Importer:

esotec GmbH - Weberschlag 9 - D-92729 Weiherhammer
Tel.-Nr: +49 9605-92206-0 Fax.-Nr: +49 9605-92206-10
e-mail: info@esotec.de Internet: www.esotec.de

Product Art.-Nr: 102115

Disposal:

Dear customer,
please cooperate in avoiding waste. When you intend to dispose of the product in future, please consider that it contains valuable raw materials suited for recycling.

Therefore, do not dispose it of with domestic waste but bring it to a collection point for the recycling of waste electrical and electronic equipment.

Thank you very much for your cooperation!



Copyright, esotec GmbH